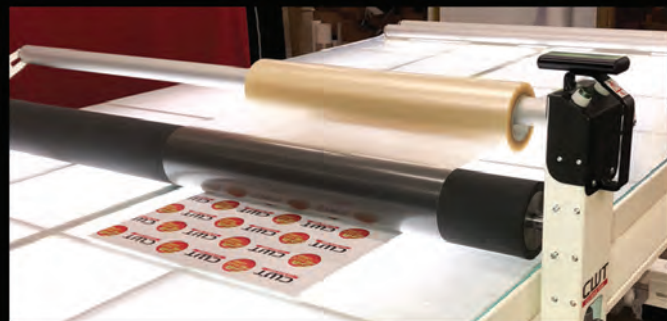


reklamis.lt



20
24

SEZONO
NAUJIENOS



Roland

GZ
GONGZHENG

COLIBRI
DIGITAL

COLIBRI
TECHNICS

ColibriLED

CWTT[®]
WORKTOOLS



INDUSTRIAL

NEW STANDARD FOR PRINTING SPEED



THUNDERJET AQ1804S

94m²/h
180cm
1440dpi
0.20eur/m²

- Extremely high print quality 1.440 dpi
- High printing speed up to 95m²/h
- PhotoPrint (ONYX OPTIONAL)
- Anti-collision System
- Efficient IR Dryer
- GZ Variable Dot Technology
- Optimized Capping & Wiping System
- AR Taking up System
- Convenient operation
- The guarantee service

Extremely fast Eco-Solvent printer. 2L Bulk ink system with ink cartridges provides an unstoppable printing process. Intelligent synchronous vacuum and Sync-width IR dryer with media width detector linkage. Auto media cutter, auto carriage lifter, and many more features.

GZ AQ1804S 4 X EPSON I3200 EI PRINT HEADS

€ 18.900



A monthly fee from **220 EUR/month**

YOU CAN PRINT



AND MORE ...

GZ INK

Special price
€ 39 ltr.

RS Royal Sovereign

ELEKTRIC TRIMMER

Special price ~~2500-Eur~~
€ 2.300



Roland®

QUALITY FROM JAPAN

TESTED BY PROFESSIONALS



Impressive print speed and quality, advanced productivity features and unmatched reliability and support make the Versa EXPRESS RF-640 large-format inkjet printer the smart choice for your business.

- Extremely high print quality 1.440 dpi
- High printing speed up to 48 m²/h
- VersaWorks® Dual RIP
- Working width 1615mm
- Easily changeable 1000 ml inks bags
- The guarantee service

12.000 Eur Versa Express RF-640

490 Eur Take up system

1.500 Eur CODIS (Bulk Ink system) 2pcs.

1.950 Eur 50 liters of ink (CMYK)

Ink price 49 Eur/ltr.

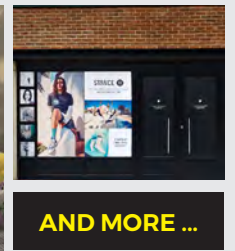
~~15.940 Eur~~

€ 12.940



A monthly fee from **195 EUR/month**

YOU CAN PRINT



AND MORE ...





QUALITY FROM JAPAN

2 PRINT HEADS, BEST FOR BANNERS, CANVAS, POSTERS



SOLJET PRO4 EJ-640

First 6.000m² of printing for **FREE**



100m²/h 162cm 1440dpi 0.30eur/m²

- Extremely high print quality 1.440 dpi
- High printing speed up to 100 m²/h
- VersaWorks® Dual RIP
- Integrated Take-up Unit
- Working width 1615mm
- Easily changeable 1000 ml inks bags
- The guarantee service

A busy, high-volume print business needs a printer that can deliver quality output at high speeds – and the EJ-640 delivers. With dual staggered print heads and a rigid new industrial design, productivity and quality are built in.

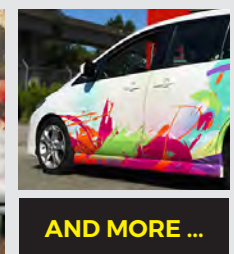
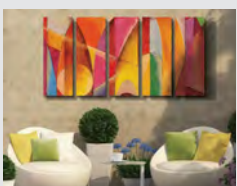
Regular price **20.900-Eur**

€ 14.940



A monthly fee from **174 EUR/month**

YOU CAN PRINT



AND MORE ...



Special price

€ 49 cartridge

Special price

€ 49 ltr.

ECO-SOLVENT INK 1615



NITE

Special price

€ 1.900

INFRARED DRYER



Roland®

NEWS FROM JAPAN

BRILLIANT QUALITY - AMAZING SPEED

DGXPRESS ER-642



VersaWorks



76m²/h



162cm



1200dpi



0.30eur/m²

- Extremely high print quality 1.200 dpi
- High printing speed up to 76.1 m²/h
- VersaWorks 6 RIP
- Working width 1625mm
- Integrated Take-up Unit
- Simple Maintenance
- Easily changeable 500 ml inks bags
- The guarantee service

The ER-642 brings all the quality and reliability of Roland DG, with exceptional print speeds. Thanks to its staggered heads and dual CMYK ink configuration, you can achieve productivity that will accelerate your business.

Regular price ~~18.200~~ Eur

€ 15.300



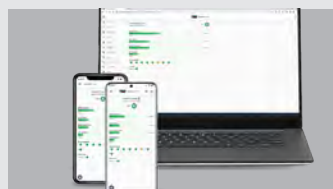
A monthly fee from 179 EUR/month



INTEGRATED TAKE-UP UNIT



SIMPLE MAINTENANCE



ROLAND DG CONNECT APP



OPTIONAL DRYER UNIT

Roland GR2-640

EXPAND YOUR BUSINESS

Offer more with a professional cutter

Special price

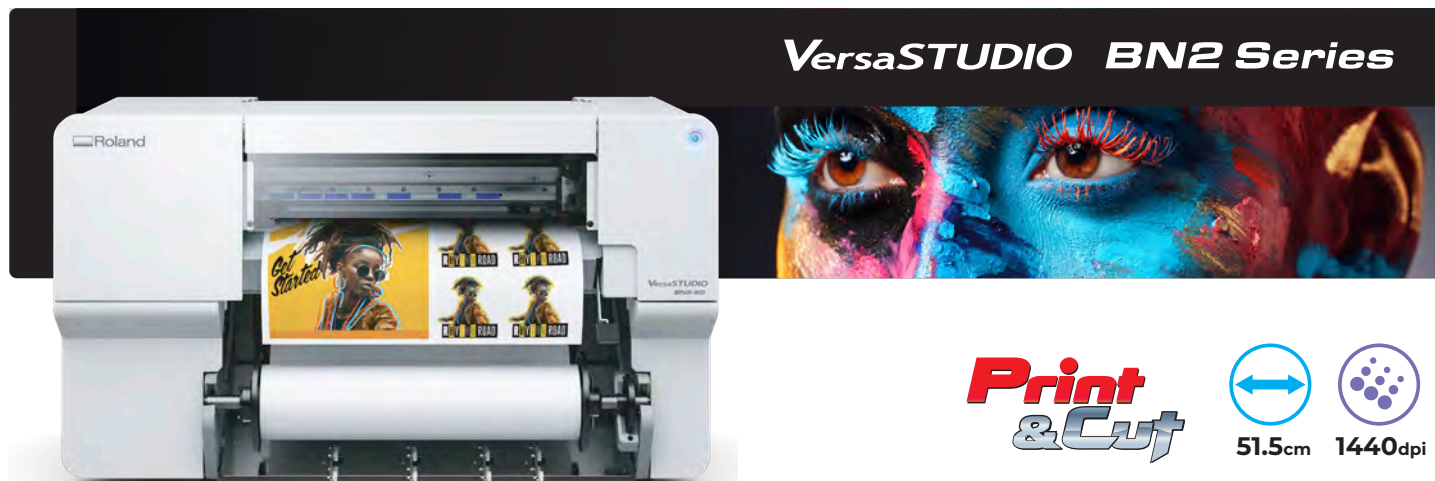
€ 4990





NEWS FROM JAPAN

FOR LABELS AND TEXTILE DECORATIONS



VersaSTUDIO BN2 Series

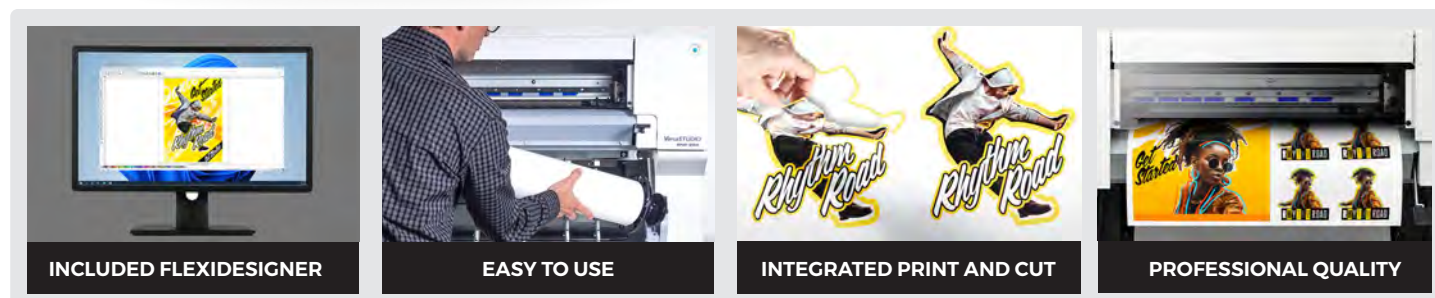
Print & Cut



51.5cm



1440dpi



INCLUDED FLEXIDESIGNER

EASY TO USE

INTEGRATED PRINT AND CUT

PROFESSIONAL QUALITY

BN2 series printer/cutters offer start-up businesses and smaller print providers professional-level print/cut quality and performance, as well as legendary Roland DG reliability, at extremely affordable pricing. Included design and output software offer everything you need to take your operation to the next level, at a price that will suit your budget.

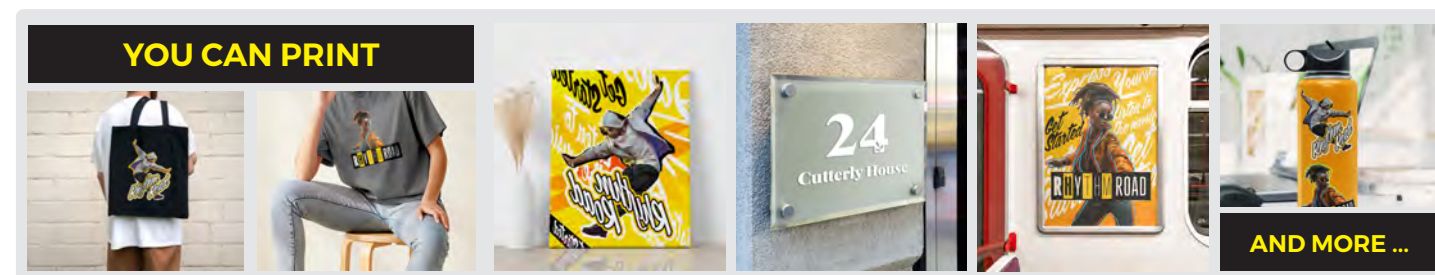
- Extremely high print quality 1.440 dpi
- High printing speed up to 2.34 m²/h
- VersaWorks 6 RIP
- Working width 515mm
- Easily changeable 220 ml inks cartridges
- The guarantee service

DESKTOP PRINTER/CUTTER **BM2-20 (CMYK + W)**

€ 6.900

DESKTOP PRINTER/CUTTER **BM2-20A (CMYK)**

€ 5.900



YOU CAN PRINT

AND MORE ...



INDUSTRIAL

**3200 MM WIDE ECO SOLVENT
WITH PRECISE PRINTING QUALITY**

THUNDERJET AQ3204S



110m²/h



320cm



1200dpi



0.30eur/m²

- 4x Genuine Epson I3200 E1 Print Heads
- Industrial Media System
- Anti-collision System
- Dual IR Dryer
- Optimized Platform & Pinch Rollers
- Optimized Capping Station
- Multi-purpose Feeding Systems
- Air Shaft Taking up System
- The guarantee service

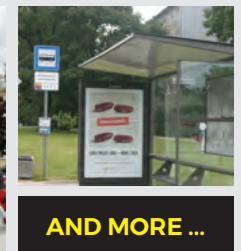
GZ AQ3204S 4 X EPSON I3200 E1 PRINT HEADS

€ 27.900



A monthly fee from
220 EUR/month

YOU CAN PRINT



AND MORE ...



Special price

€ 39 ltr.

GZ INK



COMPACT E-LIFTER

Special price

€3450



INDUSTRIAL

SUPER FAST RINTER FOR BANERS AND POSTERS - UP TO 375 SQ M / H



GZH3206SG



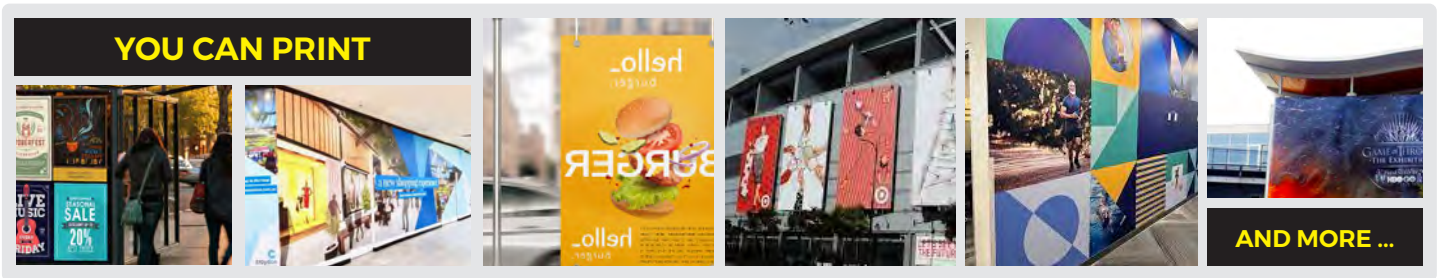
375m²/h



320cm



0.15eur/m²



- 6 Starfire Heads in 3 Rows
- Revolutionary Print Head with RediJet Tech
- GnTek Negative Pressure Recirculation System
- 2 X Power AC Servo System
- Advanced Color Management Software
- Onyx + GZ control console
- Integrated post heater & Infrared Dryer & Fan
- Feeding and taking up system with pneumatic shaft
- The guarantee service

GZH 3206SG 6 X STARFIRE 1024 PRINT HEADS

€ 59.800

A monthly fee from **690 EUR/month**

Special price

€ 1.600

8x3200mm BULL RACK XXL

Special price

€ 39 ltr.

HIGH DENSITY ECO SOLVENT INKS 1510



INDUSTRIAL

SUPER WIDE AND FAST RINTER FOR BANERS AND POSTERS

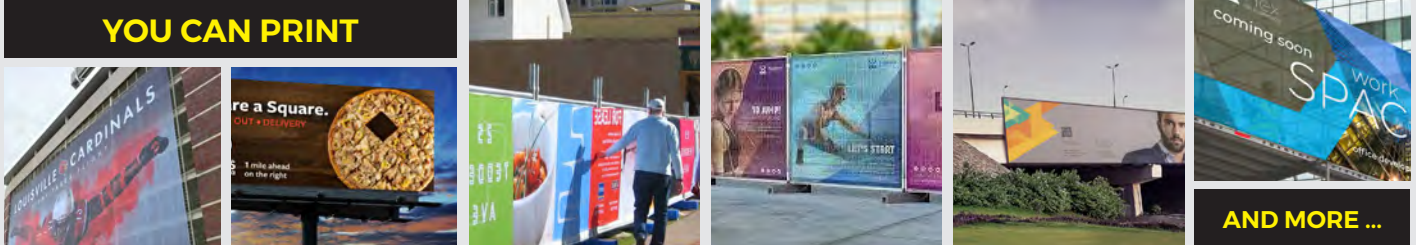


GZH5306SG

Powered by **Dimatix** FUJIFILM **RediJet** ONYX **rip**

435m²/h 530cm 0.15eur/m²

YOU CAN PRINT



AND MORE ...

- Super Wide Printing Width Up to 5.3 Meters
- 3 x Rows Staggered Heads Configuration
- GnTek Negative Pressure System
- Effective Sectional-control IR Dryer
- Advanced Color Management Software
- Available with Optional Magnetic Linear and Metal Encode System
- The guarantee service

GZH 5306SG 6 X STARFIRE 1024 PRINT HEADS

€ 88.600

A monthly fee from **1031 EUR/month**



300 Kg

1300mm

5000mm

COMPACT E-LIFTER PRO

Special price € 5174



INDUSTRIAL

MOST POPULAR, TESTED BY OUR CLIENTS AND YOUR COLLEAGUES



229m²/h
 320cm
 0.15eur/m²

Powered by

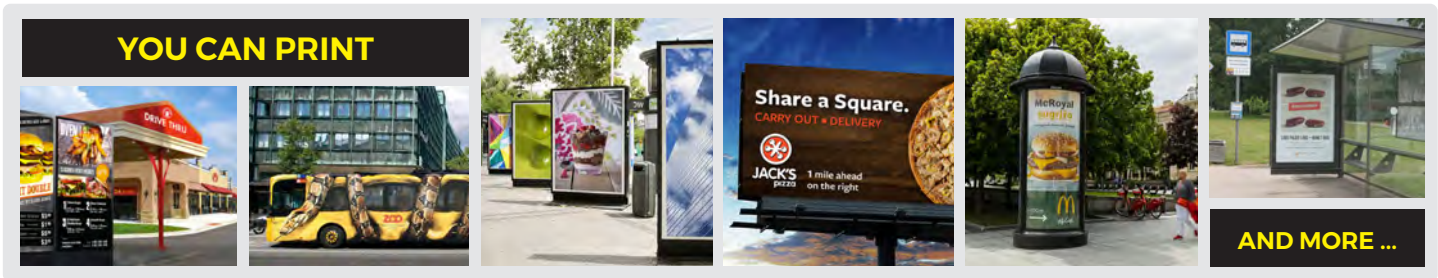
- More Precise and Durable Enhanced Body
- Upgraded 400W AC Servo System
- GnTek Negative Pressure Recirculation System
- Intelligent Energy-saving Thermal Drying System
- Advanced Color Management Software
- Optional Separate Taking Up System
- Optional Mesh Printing Kit
- The guarantee service

GZM 3202 SG 2 X STARFIRE 1024 10PL

€ 32.000 A monthly fee from **373 EUR/month**

GZM 3204 SG 2 X STARFIRE 1024 10PL

€ 44.000 A monthly fee from **513 EUR/month**



Special price
€ 39 ltr.

HIGH DENSITY ECO SOLVENT INKS 1510

Special price
€ 815 pcs

JUMBO ROLLS TRANSPORTER



NEWS FROM JAPAN

NEW GENERATION IN LATEX PRINTING TECHNOLOGY - RESIN INKS



TrueVIS AP-640



162cm 1200dpi

Newly developed water-based resin ink and innovative True Rich Color 3 preset work together to provide vibrant colour and natural-looking print quality.

High-productivity Dryer Unit allows prints to dry quickly and completely before proceeding to the next process.

Redefining resin printing with high-colour saturation on a wide range coated and uncoated media included non-PVC, vinyl, paper, film and more.

GREENGUARD Gold Certified TrueVIS Resin Ink meets the most rigorous standards for low VOC emissions into indoor air.

Piezo printheads are arranged in a dual, staggered formation with an optimizer printhead and dedicated CMYK printhead for a finer dot, resulting in more precise colour and image results.

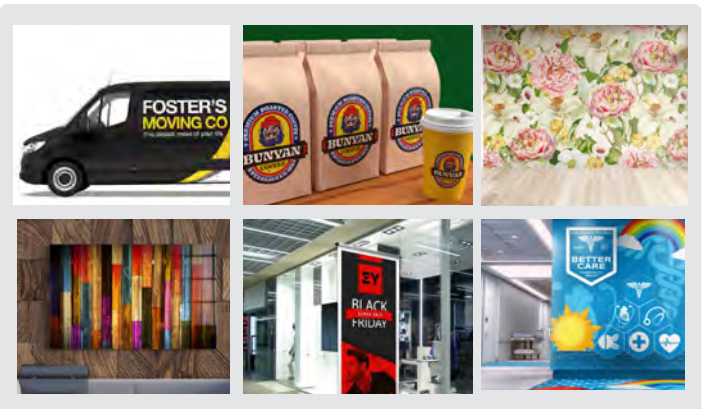
Media gap and feed compensation can now be adjusted automatically with a single button. The AP uses optical registration technology to ensure print accuracy and avoid variations in output.

Build and expand your sign and graphics business with a wide range of applications, low running-costs, and the quick drying benefits of Roland DG's first large format resin/latex printer.

€ 18.900



A monthly fee from 179 EUR/month



Roland

RESIN INK 700ML

Special price

€105



EASY RACK

Special price

€869



NEWS FROM JAPAN

NEW EXPRESSION IN PRINT AND CUT



DGXPRESS UG-641



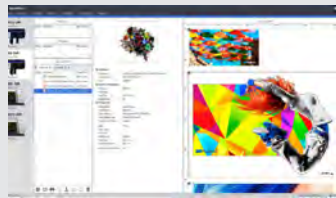
Print & Cut



160cm



1440dpi



INCLUDED VERSAWORKS 6



ROLAND DG CONNECT APP



INTEGRATED PRINT AND CUT



EXTENSION TABLE

- High-speed printing for maximum productivity.
- Highly precise print expression.
- Broad media compatibility.
- Instantly drying prints for quick turnaround and finishing.
- Speciality printing for textures and effects.
- CMYK, Gloss, White 500 / 220 ML
- Extension Table for Semi-rigid Card
- One Touch Setup
- Media Vacuum ensuring easy media set up
- Resolution setting Max 1440 x1440 DPI
- Perforated Cut
- The guarantee service

Combining the flexibility of print and cut, the benefits of UV-LED printing and Roland DG's renowned commitment to reliability, the DGXPRESS UG Series makes professional UV print technology accessible to businesses of all sizes.

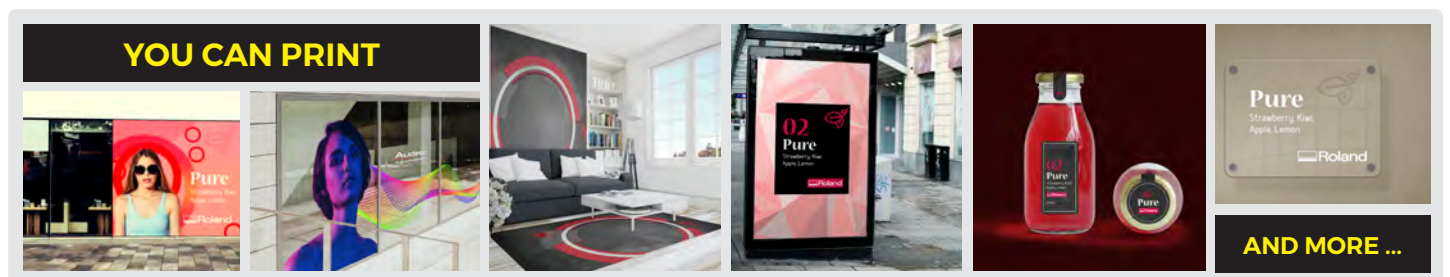
€ 12.900 Truevis UG-641

Included Original Take up system

€ 12.900



A monthly fee from **152EUR/month**



YOU CAN PRINT

AND MORE ...



Roland®

NEWS FROM JAPAN

BRILLIANT QUALITY, AMAZING SPEED

DGXPRESS UG-642



Print & Cut



50m²/h



160cm



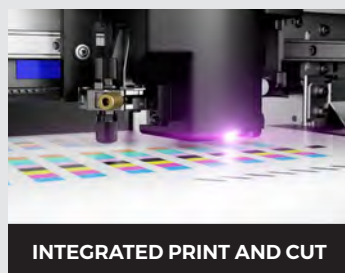
1440dpi



HIGHT SPEED PRINTING



TOUCH SREEN



INTEGRATED PRINT AND CUT



TENSION BAR

- High-speed printing for maximum productivity.
- Highly precise print expression.
- Broad media compatibility.
- Fast drying print for quick turnaround and finishing.
- Specialty printing for textures and effects.
- CMYK – CMYK Get premium results
- Gloss – Generate a multitude of tangible effects, simulated embossing and gloss finishes
- Print white details or add sub-coats materials
- The guarantee service

Outpace your competitors with the latest eco-solvent print solution in the DGXPRESS range. The ER-642 brings all the quality and reliability of Roland DG, with exceptional print speeds. Thanks to its staggered heads and dual CMYK ink configuration, you can achieve productivity that will accelerate your business.

€ 18.900 Truevis UG-642

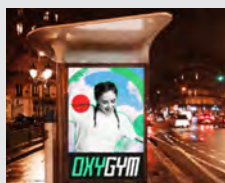
Included Original Take up system

€ 18.900



A monthly fee from 221EUR/month

YOU CAN PRINT



AND MORE ...



INDUSTRIAL

NEW STANDARD FOR UV PRINTING SPEED



EPSON
EXCEED YOUR VISION

46m²/h **180cm** **0.30eur/m²**

NEW Multi-layer printing application

- Compact designed Body & Excellent Performance
- Well Organized Design and Stable Electric System
- Epson I3200 U1
- Water cooling platen
- White ink recirculation system
- Anti-collision unit
- Adjustable stepping system
- Intelligent Heating System
- FlexiPrint
- The guarantee service

Particularly designed for multi-layer applications: colorful, 2-layers: W+C/C+W. 3-layers: CWC. 4-layers: CKWC- Day-Night. 5-layers: CWK-WC on demand with fine details

Regular price **22.500 Eur**

€ 19.700 A monthly fee from **230EUR/month**



GZ INK

Special price
€ 39 ltr.

Special price
€ 133

ARTEMIS SGE CUTTER BAR 1.5M



INDUSTRIAL

HYBRID BELT-CONVERTING UV PRINTER



PRINT FLEXIBLE AND RIGID SUBSTRATES



70-90m²/h



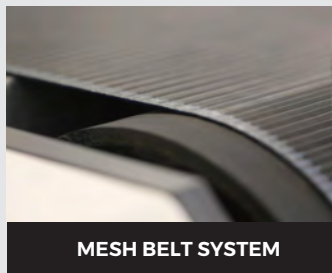
200cm



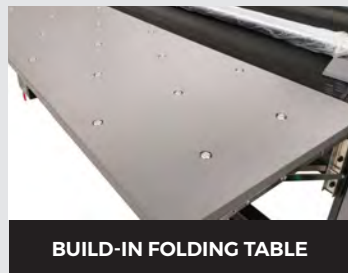
70mm



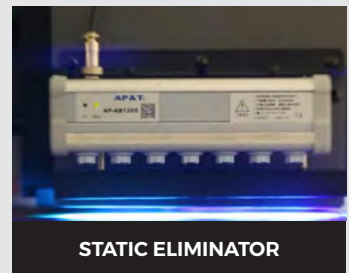
MEDIA ALIGNMENT BAR



MESH BELT SYSTEM



BUILT-IN FOLDING TABLE



STATIC ELIMINATOR

- Dual water cooling LED UV curing lamps
- Flex Print Uv version + GZ control console
- LED UV Lamps and Anti-static System Enable the Printer to Print on a WideRange of Substrates
- White Ink Stirring and Circulation System Ensures Stable White Printing and Long White Head Life
- GZ Negative Pressure System Assures Stable Ink Supply and Nozzle Jetting
- Newly Added Varnish Option Enables More Wide Range of Applications
- Built-in Folding Table Save Work Space When You Print on Flexible Media
- The guarantee service

GZF 2008 D RICOH GEN5/6 3-8 PRINT HEADS

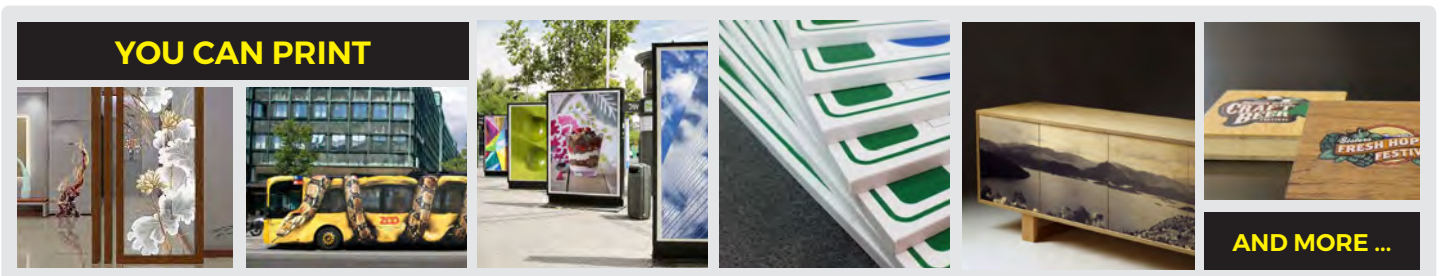
PRICE FROM **€ 75.890**

*Available with extension tables (optional)

GZF 2000 ET 2 - 7 EPSON T3200 PRINT HEADS

PRICE FROM **€ 72.890**

*Available with extension tables (optional)



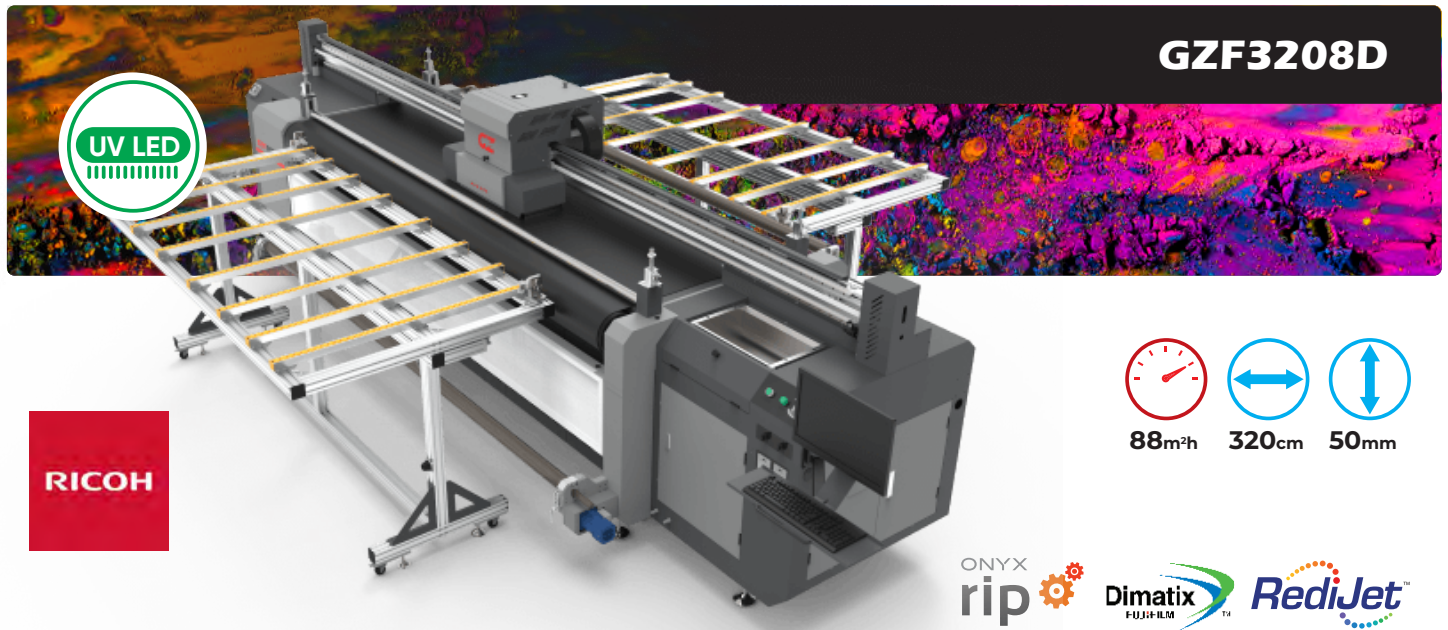
All prices VAT not included

"All trademarks and registered trademarks are the property of their respective owners."



INDUSTRIAL

3200 MM WIDE HYBRID UV PRINTER



GZF3208D



88m²/h 320cm 50mm



- Water cooling platen for temperature sensitive materials.
- Upgraded feeder delivers more stable performance when RTR application.
- Newly designed stronger body structure. Lower printing table for more friendly media handling.
- Stronger and non-deformable iron beam assures more precise carriage movement.
- Dual linear guides and 750w AC servo system assure quiet, stable & accurate carriage movement.
- GZ negative pressure system assures stable ink supply and nozzle jetting.
- White ink stirring and circulation system ensures stable white printing and long white head life.
- Media alignment bar enables easy and quick media loading when printing sheet media.

GZF 3208 D 4 X RICOH GEN5 CMYK

€ 114.900

A monthly fee from **1340 EUR/month**

*Available with extension tables (optional)

GZF 3208 D 6 X RICOH GEN6 CMYK+WHITE

€ 119.900

A monthly fee from **1400 EUR/month**

*Available with extension tables (optional)

MADE IN EUROPE

COLIBRI UV INK 5100

Special price € 39 ltr.

GZ INK

Special price € 39 ltr.



INDUSTRIAL

5200 MM WIDE HYBRID UV PRINTER



Available with white color



131m²h



520cm



70mm



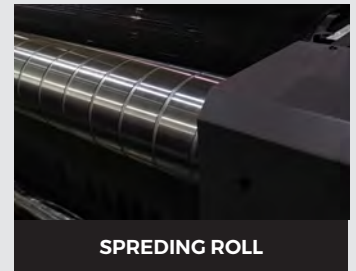
NP FOR EACH COLOR



4 ZONES VACUM TABLE



FULL SIZE AIR SHAFT



SPREADING ROLL

- Max Printing Width Up to 5.2 Meters(17 feet)
- Up to 20 Konica 1024i/1024a High-speed Print Heads
- Dual Effective and Water Cooling LED UV Lamps
- Negative Pressure System for Stable Ink Supply White Ink Circulation System Prevents Nozzle Clogging and Assures Stable White Performance
- Linear Motor and Metal Encoder Assure High Precision

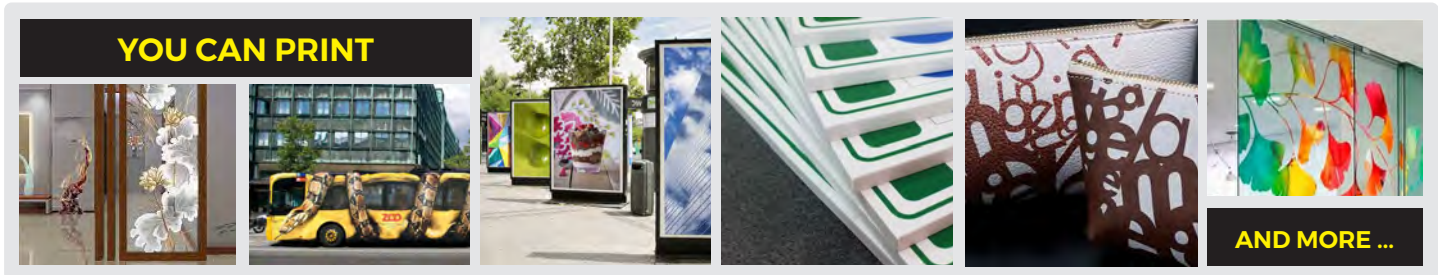
- Output in a Quiet Printing Process
- 5 Zones Vacuum Table is Suitable for Different Sizes of Materials
- Tension Adjustable Belt System Enables Precise Media Movement
- Air Shaft Feeding The guarantee service

GZR5200KM 16XKM1024I 13PL HEADS: 4XKCMY

€ 184.900  A monthly fee from **2160EUR/month**

GZR5200KM 24XKM1024A 6PL HEADS: 6XKCMY

€ 194.900  A monthly fee from **2280 EUR/month**

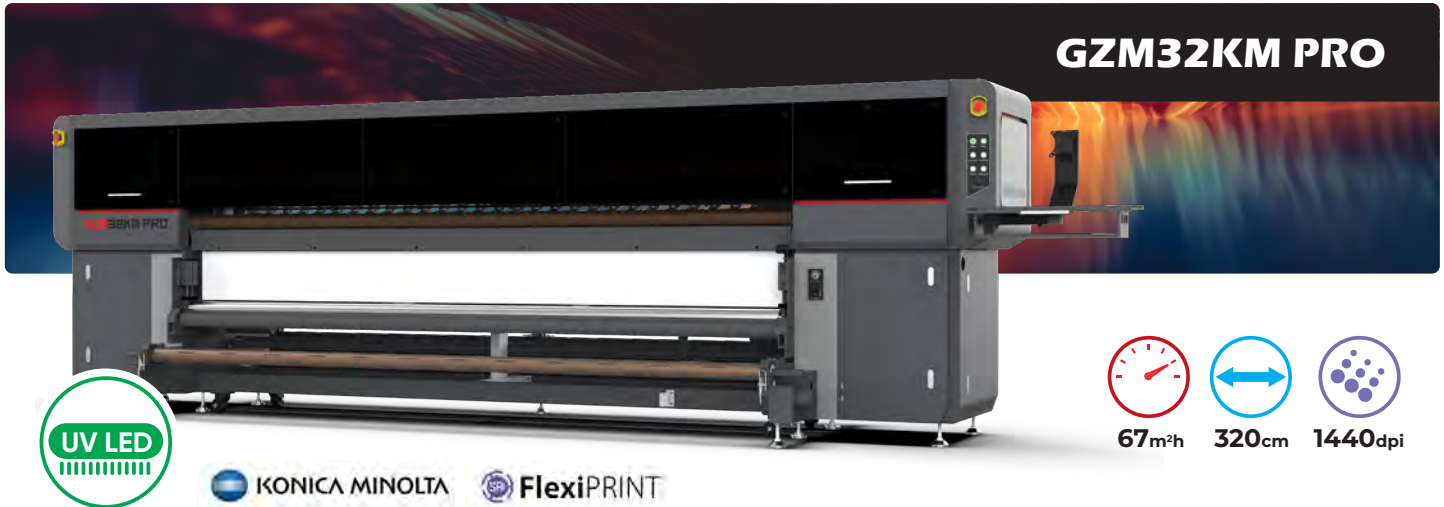




INDUSTRIAL

3200 MM WIDE ROLL TO ROLL UV PRINTER

GZM32KM PRO



The large format roll to roll printer uses UV curable ink as ink type, dries instantly when exposed to UV light, enabling rapid production and reducing smudging on the output. It adheres well to diverse substrates, offering versatility and resistance to fading & moisture. The vibrant color reproduction, sharp image quality and combines with durability for various applications.

- Negative pressure system + White ink recirculatio
- Pinch Roller System with Multi-fuction Feeder+ Triple Pinch Rolls Take-up
- LED UV curing system
- FlexiPRINT UV Edition (Optional Onyx)
- The guarantee service

GZM 32KM PRO 4XKM1024I 13PL PRINT HEADS

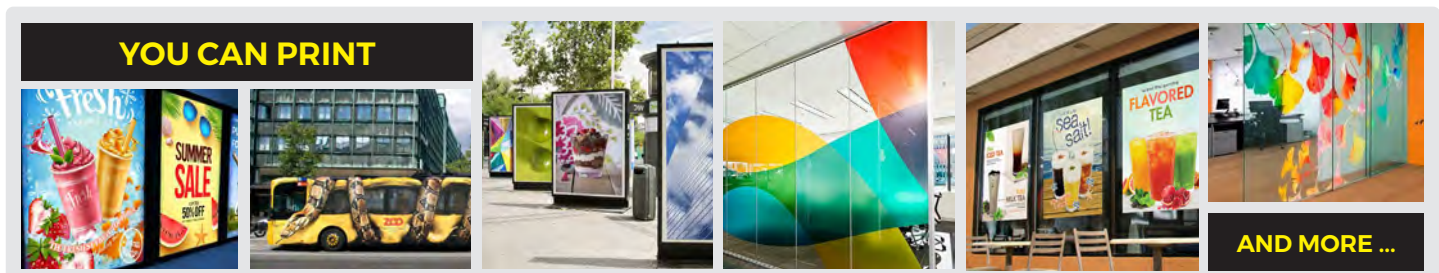
€ 74.900

A monthly fee from **880 EUR/month**

GZM 32KM PRO 8XKM1024I 13PL PRINT HEADS

€ 84.900

A monthly fee from **990 EUR/month**



NEW

5414

UV LED Inks Series



Ultra-high adhesion



This is an ultra premium LED-UV Ink with a stunning color gamut, performance, accurate color reproduction and the ability to print on a wide range of media.



COMPATIBLE WITH ROLAND:

LEF12I, LEF20, LEF200, LEF2-200, LEF300,
LEF2-400, LEJ640, LEJ330



**SCRATCH
RESISTANCE**



Print-Head: Epson DX4/DX5/DX6/DX7
Compatibility: Roland® ECO-SOL UV4
Packaging: 440ml, 220 ml Cartridges
Colors: CY, MG, YE, BK, WH, VR, CL

5414 CARTRIDGES JUST PLUG & PLAY LIKE THE ORIGINAL

Our colors are a virtual match of the original and since it's so incredibly close to the original there's no need to change the color profile.

€68 pcs/220ml.

Price buying 2 sets (CMYKVV)



QUALITY FROM JAPAN TESTED BY PROFESSIONALS



Roland Texture System Library
53x36cm **10cm**

LEF2-200

Roland Texture System Library
80x36cm **10cm**

LEF2-300

Regular price ~~26.900 Eur~~
€ 19.900 A monthly fee from 235 EUR/month

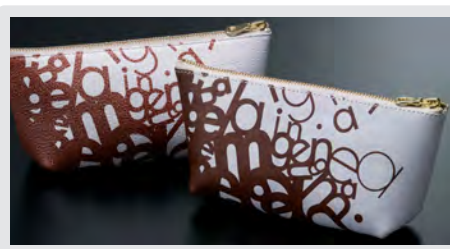
Regular price ~~35.900 Eur~~
€ 29.900 A monthly fee from 350 EUR/month

Print 3D Embossed Finishes



You can produce premium UV quality gloss and matt finishes as well as amazingly life-like textures including simulated 3D embossing with multiple layers of UV clear ink

Print with UV technology



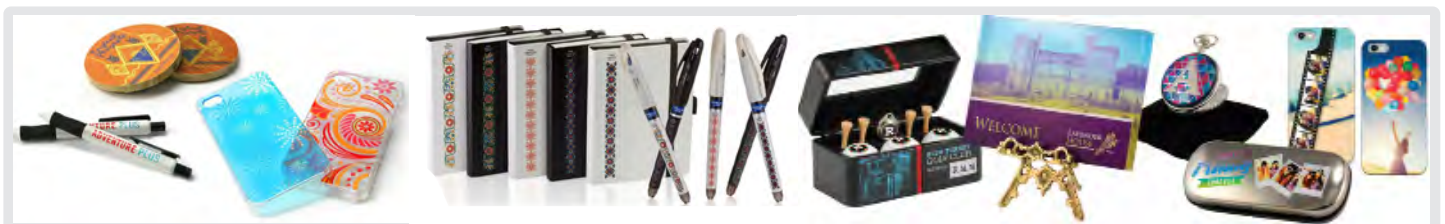
You can print as few as one item at one time, on demand. It gives you the versatility to create prototypes, produce a special one-of-a-kind gift, or print a small volume of items in-house.

From Flat to Curved Objects



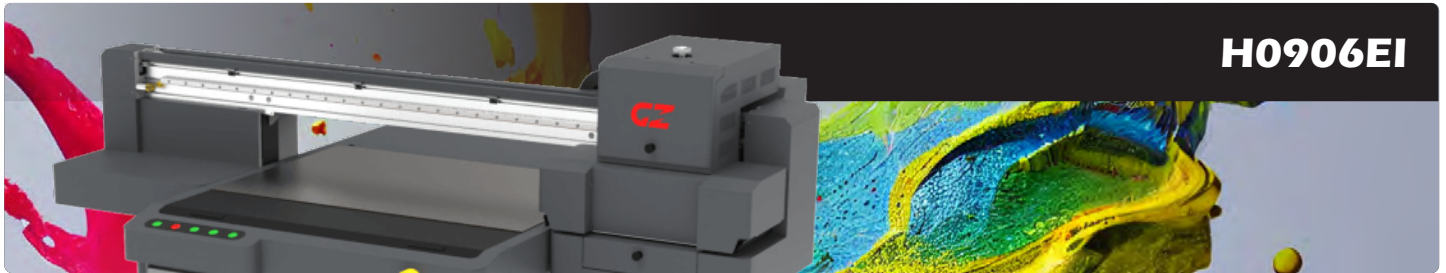
Print materials up to 100 mm thick can be loaded, and a height tolerance of 2 mm facilitates printing on irregular and curved objects.

Print Directly on a Wide Range of Materials directly onto PVC and plastics, canvas, wood, leather, fabric, metal, glass and more





NEW STANDARD FLATBED UV PRINTER WITH ROTARY DEVICE



H0906EI



90x60cm



15cm



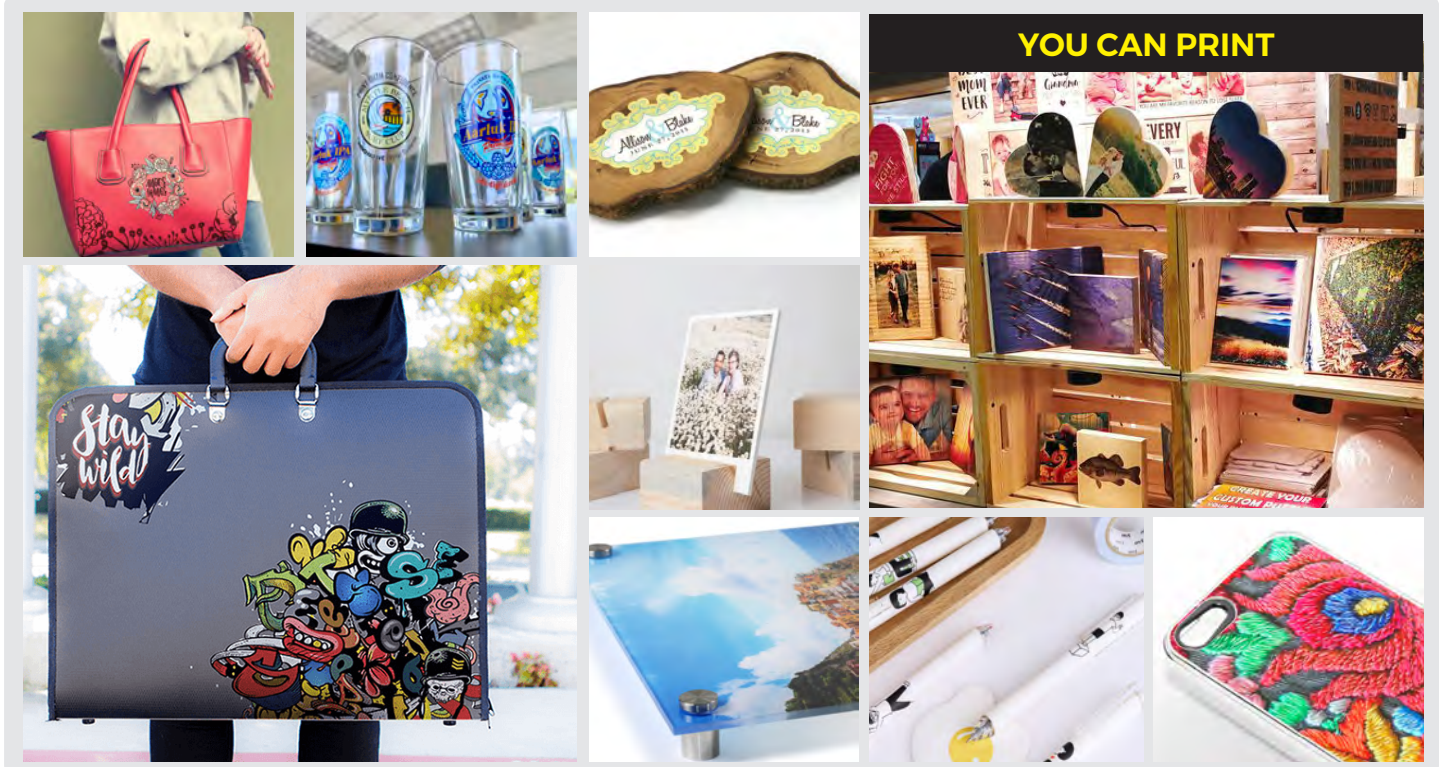
75CM WIDTH ONT CYLINDER PRINTING KIT

- LED UV curing system
- Fast up to 4.2mins/sheet 90x60cm printing speed
- Four water cooling LED UV curing lamps
- 3 Epson I3200 U1 print heads
- FlexiPRINT Mini UV + GZ control console
- Auto-matic media detector
- Precise vacuum platen with 12 adjustable points
- Bulk ink supply system with white ink re-circulation system
- The guarantee service

Regular price **22.900-Eur**

€ 18.940

A monthly fee from **221 EUR/month**



YOU CAN PRINT



NEWS FROM JAPAN

UV FLAD BED PRINTER



Whether you supply signage and graphics for shopfronts, events, corporate, interior decoration or any number of other applications, the VersaOBJECT EU-1000MF is a revolutionary way to print and create new business opportunities. Compatible with hundreds of substrates and delivers high-impact graphics, the EU-1000MF fits seamlessly into your workspace and offers the ease, speed, quality and value you need to take your business to the next level.

- High-speed printing for maximum productivity
- Highly precise print expression
- Fast drying print for quick turnaround and finishing
- Specialty printing for textures and effects
- CMYK – CMYKWHGI
- SAI FlexiPRINT Plus Roland DG Edition
- Max load 45 kg/m²
- The guarantee service

Print on PVC panels, foam panels, corrugated cardboard, aluminium plates and more.

Fast printing with four-colour/four-head and six-colour/six-head models.

Reliable, high-quality printing with high-density, low-cost E-US inks, a liquid-cooled LED lamp system, a four-zone vacuum bed, and many more advanced features.



28m²h



244x122cm



9.5cm



1200dpi

EU-1000MF **CMYK**

Regular price ~~95.900~~ **Eur**

€ 60.900



A monthly fee from **816 EUR/month**

EU-1000MF **CMYK+WH+GL**

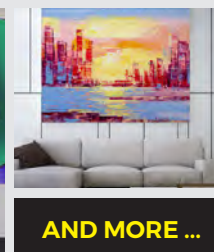
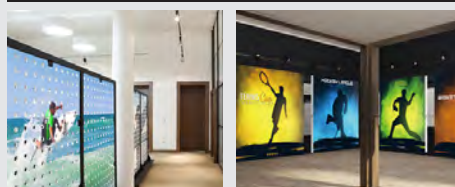
Regular price ~~102.900~~ **Eur**

€ 97.900



A monthly fee from **1350 EUR/month**

YOU CAN PRINT

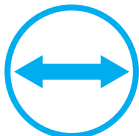


AND MORE ...

RET 2002F ELECTRIC TRIMMER



~~2.500 Eur~~
€ 2.300



200cm

- Fast cutting with up to 6.6ft/sec blade speed
- Long activation bar running the length of the unit
- Included foot pedal for hands-free operation
- Open back design for trimming longer prints
- Bi-directional rotary blade
- Waste catcher collects scrap trimmings
- LED back-lighting along cutting edge
- Stand included with castors wheels
- Optional roll holder to aid in trimming
- Built-in safety covers
- The guarantee service

FOTOBA

DIGITAL PRINT FINISHING SOLUTION



SELF-SHARPENING ROTARY BLADE

18m/min **160cm**

SELF-SHARPENING ROTARY BLADE

18m/min **170cm**

Fotoba WR 64
 Can cut on both the X and Y axis.

Fotoba XLE 170
 Digitrim sheet function. Automatic X correction.

Regular price ~~17.500 Eur~~
€ 15.700 A monthly fee from 260 EUR/month

Regular price ~~28.500 Eur~~
€ 25.600 A monthly fee from 380 EUR/month



NEW

WORKS FOR OLMOST ALL FABRIC



DTF ULTIMA R62X

PRECISIONCORE *Hoson Board*

Powered By
EPSON
EXCEED YOUR VISION



18m²/h



62cm



1440dpi

DTF ULTIMA RX62 4 X I3200 A1 PRINT HEADS

€ 16.700

 A monthly fee from 620 EUR/month

- Self-contained heads for shipment,
- Head without installation
- Tension bar media feeding system
- Automatic print head moistening & Ink heating to prevent print head from clogging

DTF ULTIMA RX62 2 X I3200 A1 PRINT HEADS

€ 14.700

 A monthly fee from 620 EUR/month

- Powder Control System
- Built-in smoke filter (upgradeable)
- Electric pinch roller control systems
- The guarantee service



COLIBRI DTF INK 8900

Special price
€ 79 ltr.



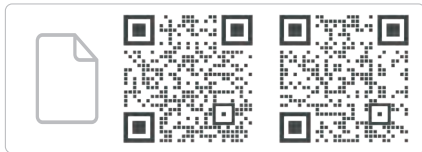
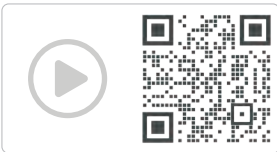
 40x60cm

 280 °C

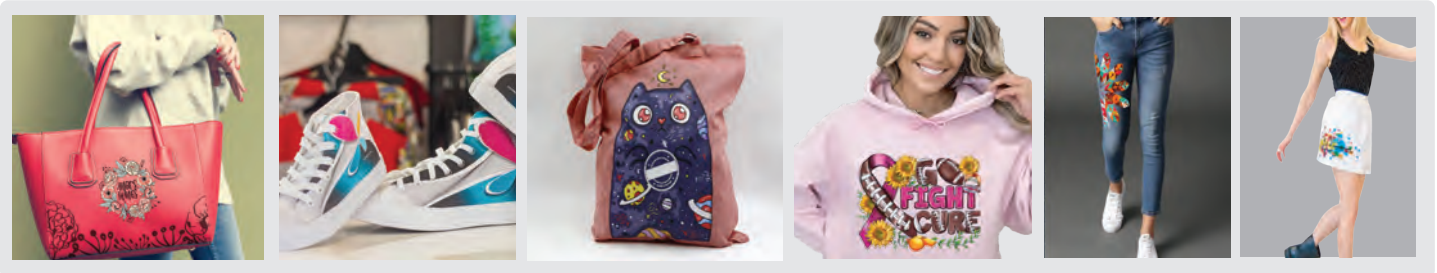


Special price ~~1100 Eur~~
€ 870

HEAT-PRESS



NEW HIGH VOLUME PRINTING SOLUTION



DTF ULTIMA A2 2 X I1600A1 PRINT HEADS

€ 12.700 A monthly fee from 620 EUR/month

1 kg pack
€ 36

INDUSTRIAL DTF POWDER

Wide: 60/40/30 cm
2.65 €/m²

COLIBRI DTF PET FILM, HOT PEEL



Texart

XT-640

ergosoft
Roland Edition
the rip for digital textile print production

102m²h **160cm** **1200dpi**

- Dual print heads increase production speed and maximise colour quality with 7-droplet technology.
- 4-colour high-speed printing or 8-colour printing for wider colour gamut and smooth colour gradients.
- Roland DG Fluor Colour Library offers hundreds of new colours with new Fluorescent Pink and Yellow inks.
- The guarantee service

25.500 Eur	XT-640
Included	Original Take up system, BIF Ink Bulk system
28.500 Eur	Calander Diferro MP-17B320C

Regular price ~~54.000-Eur~~

€ 52.900

A monthly fee from **965 EUR/month**



TOP SPEED

+ FIXATION UNIT



GZS 3204 PLUS + CALANDRA

Powered By
ergosoft



241m²h



320Cm



1200dpi

GZ SUBLIMATION INKS
€ 39 ltr.

GZS3204 PLUS 7 X STARFIRE 1024 7PL
€ 84.500 + FIXATION UNIT



YOU CAN PRINT



NEW

EXCEPTIONAL PRECISION



GZ APSARAS G4 / G5

- Industrial Feeder
- NeoStampa Delta+ GZ manager
- Anti-collision System
- Efficient IR Dryer
- GZ Variable Dot Technology
- Auto Capping & Wiping System
- High Precision Media System
- Grooving Anti-Wrinkle Platen
- Big Volume Ink Supply System
- The guarantee service

Powered By



360m²h



195cm



2400dpi

GZ G4 8 X GENUINE EPSON I3200 A1

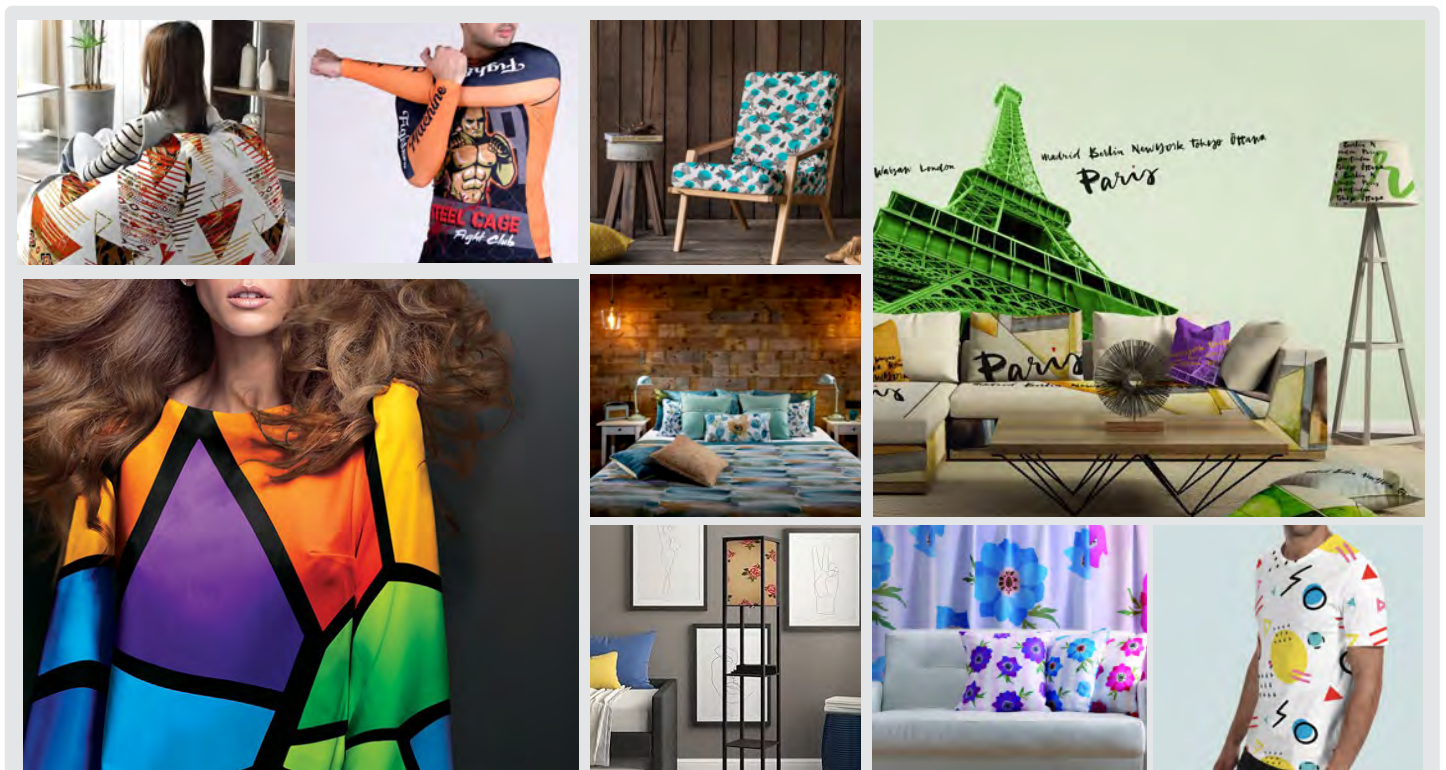
€ 42.000

A monthly fee from **590 EUR/month**

GZ G5 4 X GENUINE EPSON I3200 A1

€ 36.700

A monthly fee from **430 EUR/month**





NEW THE UNIQUE ECO SOLVENT SOLUTION FOR TEXTILE



Make Printing Ideas With Brilliance

The best quality eco solvent printer provides PU solutions with a belt system. This machine uses the specialized GZ specific PU ink to offer exceptional adhesion, flexibility and durability on various materials. This ink type delivers vibrant colors, excellent dry fastness and resistance to cracking. The feeding system of eco solvent printer gives a consistent substrate supply and employs advanced mechanisms to handle various PU materials.

Powered By



140m²h



180cm



1800dpi



HEAVY-DUTY FEEDING



INDUSTRIAL LEVEL STRUCTURE



BELT FEEDING



GENUINE EPSON I3200 E1

- Industrial media system
- Variable Dot Technology
- Anti-collision System
- One IR Dryer (WD1804E)
- Dual IR Dryers (WD1808E)
- GZ Variable Dot Technology
- Auto Capping & Wiping System
- High Precision Stepping System
- Big Volume Ink Supply System
- The guarantee service

GZ WD1808E 4 X GENUINE EPSON I3200 E1

€ 23.700

A monthly fee from **280 EUR/month**

GZ WD1808E 8 X GENUINE EPSON I3200 E1

€ 28.700

A monthly fee from **335 EUR/month**



All prices VAT not included

"All trademarks and registered trademarks are the property of their respective owners."

NEW

AUTOMATIC CHANNEL LETTER BENDING MACHINE

COLIBRI CT-LB20200 / CT-LB20200 PLUS



COLIBRI DIGITAL CT-LB20200

€ 18.900



A monthly fee from
220 EUR/month

COLIBRI DIGITAL CT-LB20200 PLUS

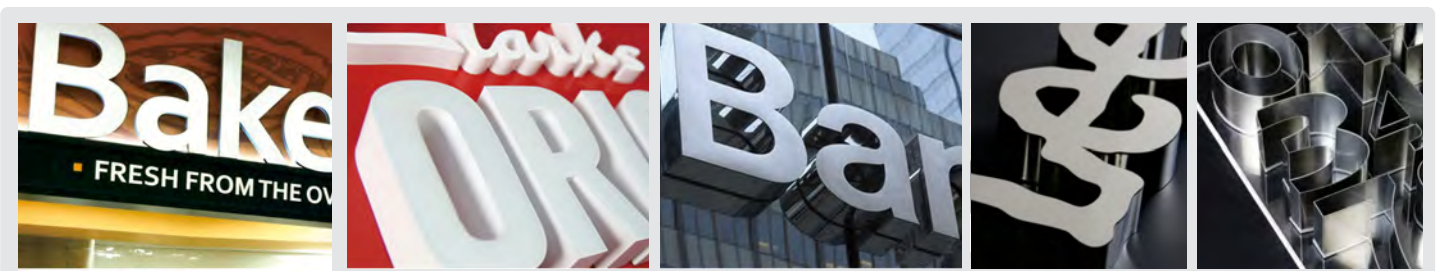
€ 22.900



A monthly fee from
265 EUR/month

Machine Capabilities

- Panasonic Full servo control system make it high speed high precision and more stable. High quality ball screw combine with linear guideway feeding design ensure the feeding precision as well as stability.
- The casting on clamping increases the grasping force, meanwhile does not scratch the material.
- Length encoder and closed-loop control system matches the finished product with the source file perfectly.
- The mono-bloc casting of bending mechanism has high molding degree With 40L/ Mini Oil-free Air Compressor.
- Standard adjustable lift feeding cabinet can satisfy all sizes of material.
- Carefully calibrate the best fit parameters of each servo in different structures and requirements, make each action smooth and fluency, the coordination of each structures precise and stable. Full servo systems can complete the parameters more accurately and quickly
- Mechanical arm and alternating clamp feeding designed, servo drive + high quality ball screw and linear guide rail configuration make feeding smooth and steady. No deformation of the material. Length encoder and closed-loop control system matches the finished product with the source file perfectly
- Using plane cutter for stainless steel and galvanized sheet, using milling cutter for aluminum plate and profiles.



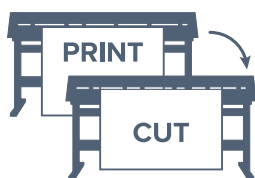


NEW

EXPAND YOUR BUSSINES



CAMM-1



GR2-540

GR2-640



178cm

€ 3.990



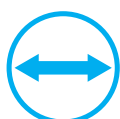
159cm

€ 4.750



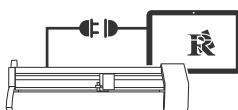
VersaSTUDIO GS2-24

€ 1.490



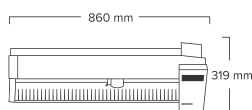
58.4cm

Quick and Easy Set-up



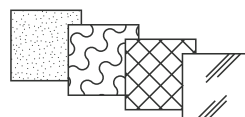
Start producing graphics immediately with no expertise

Small Footprint



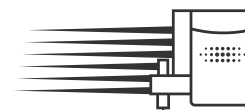
Perfect for any home, office or professional environment

Broad Media Support



With a range of 30-500 gf, you can cut a wide range of materials

Rapid Workflow



Extend your capabilities with minimal impact to your workflow



NEW

FLATBED APPLICATOR TABLE



CWTT EVOLUTION 1737



Tested and proven!

Complies with CE, UL, ISO 9001 and ISO 14001.

UPGRADABLE OPTIONS



EVO HOT

Motorised gantry. Heat assisted roller for faster lamination process. Heat setting between 30-60°C



EVO STORAGE

Utilizes the empty space under the worktable as an integrated storage solution for rolls and panels.



EVO DRIVE

Motorised gantry. Ergonomic option that grants for consistent lamination speed and quality. Speed settings 1-9m/min



EVO LIFT

Always ensure the most ergonomic working height with integrated electric height adjustment. You can adjust the height of the table top electrically from 800-1 090mm (31in.-42in.) to ensure an ergonomic working position.

CWTT EVOLUTION 1737

The set consists of	Price
CWTT 1737 (1745x3125mm)	14.900 eur
LED lighting	1800 eur
Silent air compressor	890 eur
CWTT liner 170cm	970 eur
Cutting stick 70-120cm	110 eur
Cleaning roller	185 eur
Delivery, installation	600 eur

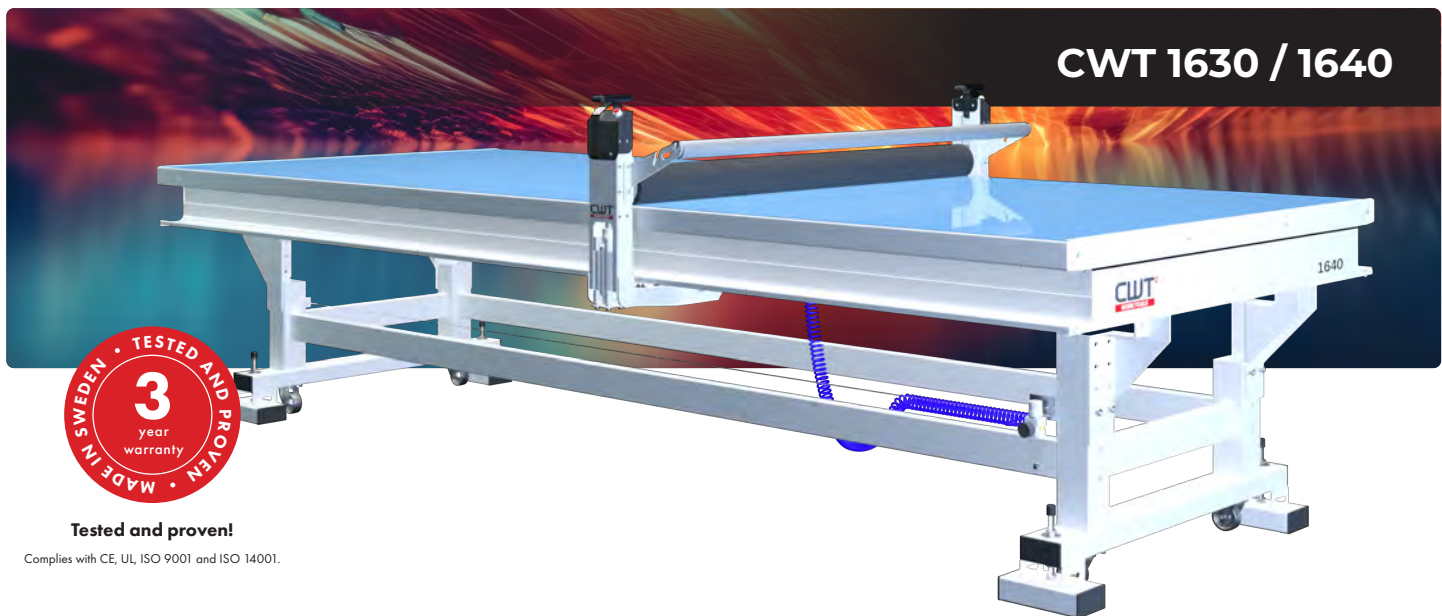
~~€ 19.900~~
€ 16.700





TOP SELLING

FLATBED APPLICATOR TABLE

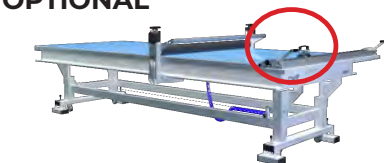


CWTT 1630 / 1640

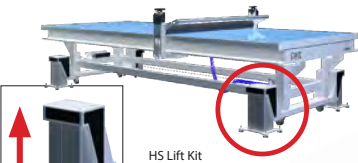
Tested and proven!

Complies with CE, UL, ISO 9001 and ISO 14001.

OPTIONAL



Pro Cutter shelf
 •Integrates with CWTT 1600 Regular series
 •Compatible with CWTT Pro Cutter
 •Inglot Inbest Pro Cutter Bar*, Keencut Evolution E2*



HS Lift Kit
 CWTT Regular flatbed applicator equipped with HS electric lift kit. Kit fits all CWTT Regular models and includes lift columns and control unit.

CWTT 1630

The set consists of	Price
CWTT 1630 (1600x3000mm)	10.600 eur
LED lighting	1.800 eur
Silent air compressor	890 eur
CWTT liner 170cm	970 eur
Cutting stick 70-120cm	110 eur
Cleaning roller	185 eur
Delivery, installation	600 eur

~~€ 15.155~~

€ 12.900

CWTT 1640

The set consists of	Price
CWTT 1640 (1600x4000mm)	11.900 eur
LED lighting	1.900 eur
Silent air compressor	890 eur
CWTT liner 170cm	970 eur
Cutting stick 70-120cm	110 eur
Cleaning roller	185 eur
Delivery, installation	700 eur

~~€ 16.655~~

€ 13.900



LINEAR CUTTER

Linear Cutter is perfect for trimming soft and flexible substrates such as vinyl and banners, and also a variety of rigid and semi-rigid materials such as boards, including extruded PVC, corrugated plastic and foam board. Linear Cutter is a safety ruler that enables precision cutting up to 3.3 metres

CWTT LINER CUTTER 250CM

€ 1080

CWTT LINER CUTTER 170CM

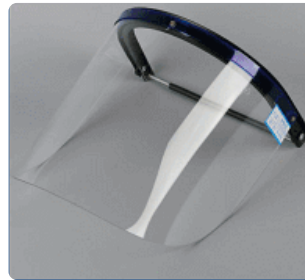
€ 970



DIGITAL CUTTING LST SERIES

LS series cutting plotter is a model with superior speed and accuracy. Supported by a DSP control center and digital servo motor, it wins the market by its best cost-performance. The LS series cutting plotter is equipped with various kinds of cutting and impressing blades and can be used in the cutting, plotting and impressing of many materials such as PVC board, PP board and white card paper. The maximum cutting depth is up to 2mm, depending on material density.

- **CCD camera automatic registration system**
Precise positioning and automatic contour cutting.
Automatic cutting files management.
- **Automatic materials feeding system**
Stable & efficient sheet feeding system. (* Roll to sheet feeding Fan Road, Hi-tec)
- **Compact and versatile cutting head**
Full cutting, kiss cutting, creasing & perforation



DIGITAL CUTTING JWEI LST-0604-RM



1200mm/s



60x40cm



≤ 1.5mm

The JWEI LST-0604-RM is a flatbed digital cutting table with a format of 600 x 400 mm, designed for the production of small and medium series of paper boxes, displays, business cards, puzzles, stickers, etc. It integrates a motorised cutting tool, a creasing wheel, a half-face tool and a non-motorised cutting tool, which allows the operator to have great flexibility in working for original results.

€ 15.700



A monthly fee from
185 EUR/month





DIGITAL CUTTING LST-0806-RM



1200mm/s



80x60cm



≤ 6 mm

EOT version



≤ 3 mm

PCT version

Box Cutting and Creasing Plotter covers B2 size fully (800mm x 600mm), the success rate of automatic feeding is up to 95% after optimizing the feeding system, and the cutting efficiency reaches 70s/sheet, roll sheet cutting is also available. **LST03II-0806-RM cuts material includes label, cardboard, PVC, self-adhesive, foam board, magnetic sticker, box, plastic film, etc.**



€ 19.900



A monthly fee from 232 EUR/month



DIGITAL CUTTING LST-0912-RM



1200mm/s



90x120cm



≤ 6mm

Cardboard box cutting machine of the graphic and packaging industry, which solves the industry challenges in the short-run digital die-free market. A fully automated cardboard box cutting machine with a larger format of 900x1200mm. Upgrades its stack height to 180MM at the same time, and its cutting efficiency reaches 70 seconds/A3, 90 seconds/B2. Equipped with efficient cutting tools from JWEI rich tool library, provides fully automatic intelligent solution **for cutting cardboard, self-adhesive, PVC, PP plate sheet, gray board, E/F-flute, corrugated board, KT board etc.**



€ 29.900



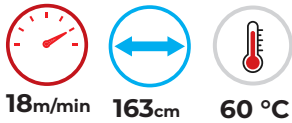
A monthly fee from 350 EUR/month

All prices VAT not included

"All trademarks and registered trademarks are the property of their respective owners."



COLIBRI TECHNIC CTL 1700H



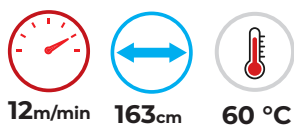
- Perfect Laminating Quality with Stronger Roller Pressure
- Laminating & cutting with max speed of 18m/min
- Hot and cold lamination
- Fully adjustable speed, nip-gap, and pressure
- Ideal fit for mounting & laminating pressure-sensitive graphics
- Ergonomic control panel
- Long life-span of laminating roller
- Adjustable speed settings
- Footswitch for convenient operation on every side of laminator

Full-automatic With Pneumatic Rolls

Laminator with cutting and heating.

€ 5700

COLIBRI TECHNIC CTL 1700M



- Perfect Laminating Quality with Stronger Roller Pressure
- Laminating & cutting with max speed of 12m/min
- Hot and cold lamination
- Manual nip-gap and pressure adjustment
- 130mm diameter silicon rollers for heavy-duty work
- Auto-locked exchangeable roll shafts
- Ideal fit for mounting & laminating pressure-sensitive graphics
- Ergonomic control panel
- Long life-span of laminating roller
- Adjustable speed settings

Semi-automatic




Laminator with cutting and heating.

€ 3700



RSH-380SL




~~2.100 Eur~~
€ 1.650

 5m/min  38cm  250 °C



QTOPIC-380

~~12.700 Eur~~
€ 9.900

 10m/min  38cm  150 °C

Automatic ripping & sheets feeding system.

- Mechanism for sheets alignment
- Convenient management console
- Pneumatic roller pressure



Auto Open High Pressure Heat-Press

Manual Heat-Press



CT-MHP6040


~~1.100 Eur~~
€ 870

 40x60cm  280 °C



TS-ONE

€ 1.500

 38x50cm  220 °C

CO2 LASER SYSTEM CT-1610N



160x100cm



100-150w

The ColibriTechnics laser cutting machines is engineered to effectively cut a wide range of non-metallic materials, including but not limited to: wood, paper, leather, clothing, PMMA, epoxy, acrylic, wool, plastic, rubber, bamboo, leather, garment, phone accessories, paper for decals, rhinestones, plastic nozzles, and jade products.



■ Dual Heads

Adopted dual laser heads, equal to two machines, which greatly improving efficiency.

€ 11.290



A monthly fee from
132 EUR/month



■ Electronic lifting

The machine can automatic adjust the working table to satisfy the demands of cutting different thicknesses materials. The lifting height can reach 20cm.



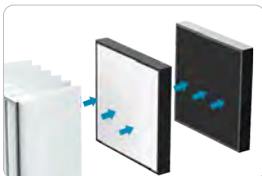
■ Automatic Focusing

Auto focusing makes the laser head focus easily and quickly. Do not need to adjust the focal length by hand, saving much time and has higher accuracy.



■ RECI Laser Tube

Higher laser output power density, concentrated light beam, uniformly light spot, high working efficiency, high cutting speed. The laser tube adopts the special manufacturing technique, the laser beam is sharpen after focusing, the mark line is narrow, the scale is deep, the resolution is high, the picture character is clear.



■ High Efficiency Air Filters

Environmentally friendly and pollution-free laser can be directly used indoors.

■ Double Platforms

Both knife blade and honeycomb platforms for cutting and engraving.



CO2 LASER CT-1390



130x90cm 100-150w

€ 8.290

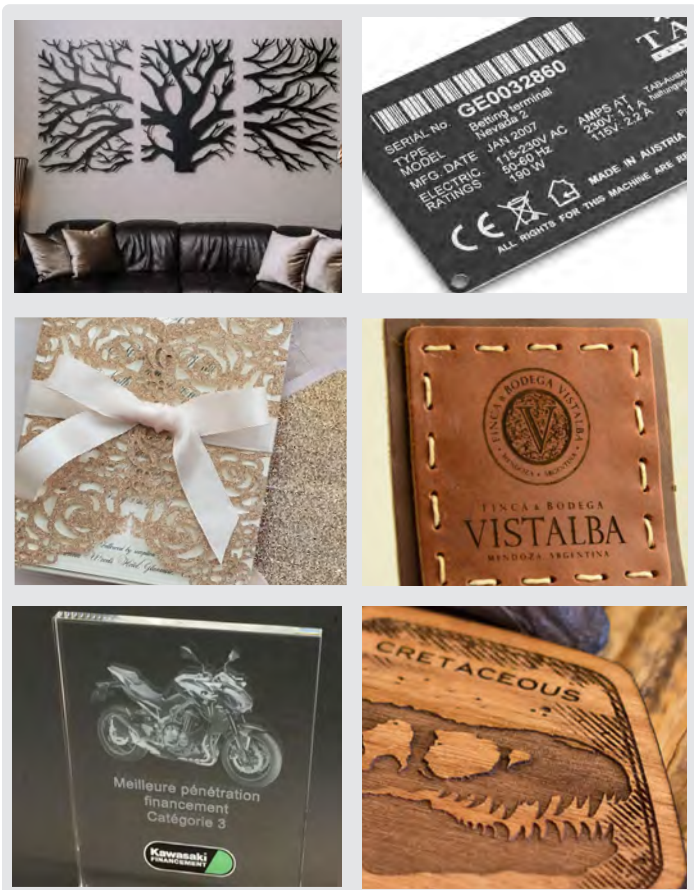


CO2 LASER CT-6090



60x90cm 100-120w

€ 6.290



CO2 ENGRAVING CT-6040



60x40cm 60-100w

€ 5.290

COLIBRI DIGITAL® TEXTILE

IŠPARDAVIMAS



COLIBRI® FLAG TEXTILE
PLOTIS: 320CM GRAMATŪRA: 110 GSM

€ 0.97 /M²



BLOCKOUT DISPLAY TEXTILE
PLOTIS: 255CM GRAMATŪRA: 260 GSM

€ 2.35 /M²



STRECH DISPLAY TEXTILE
PLOTIS: 255CM GRAMATŪRA: 260 GSM

€ 2.09 /M²



DISPLAY TEXTILE
PLOTIS: 210CM GRAMATŪRA: 230 GSM

€ 1.32 /M²