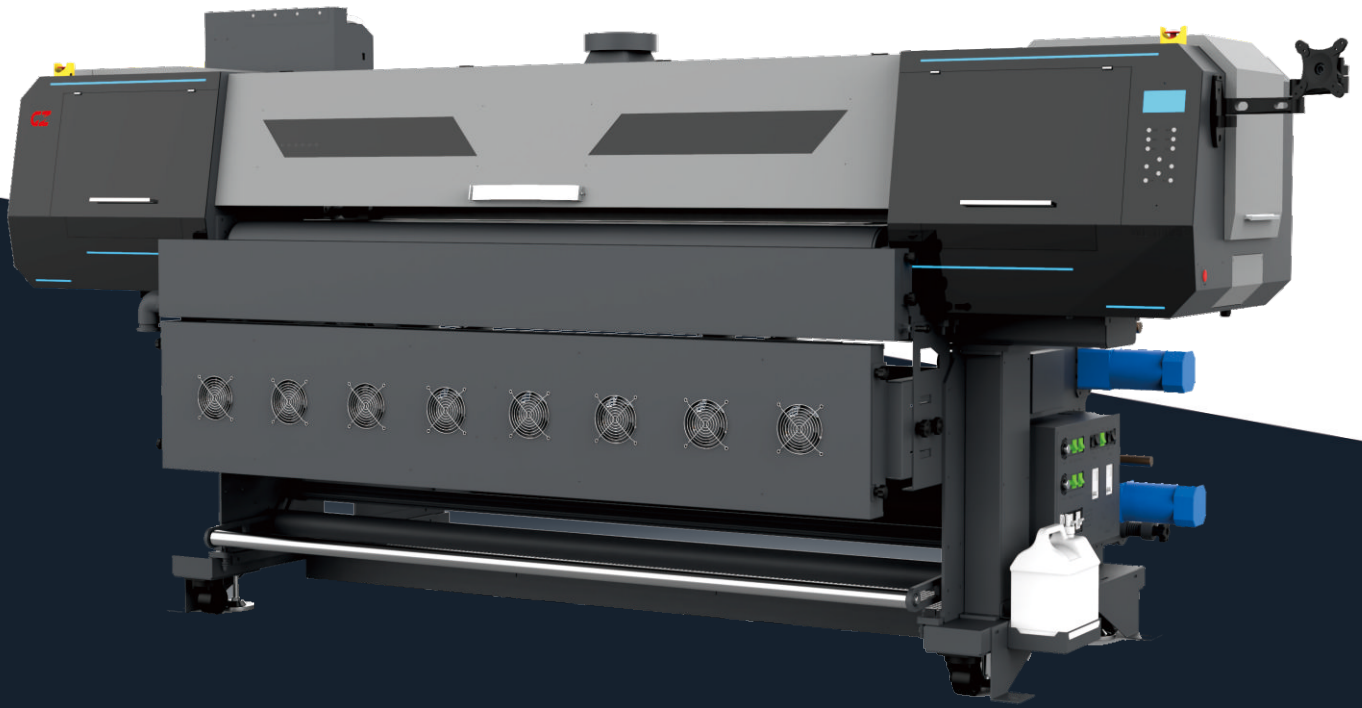


# WD1804E WD1808E

Eco Solvent PU solutions with Belt System



Artificial Leather



Raincoat



Down Jacket



Snow Boots



Epson I3200  
Natural 600dpi



Industrial media system



Anti-collision unit



Efficient IR Dryer

# WD1804E WD1808E

ITEM	SPECIFICATION				
Model	WD1804E/WD1808E				
Print Head	4/ 8 x Epson I3200 E1 print heads				
Technology	Piezo Variable dot (Greyscale)				
Ink	GZ specific PU ink				
Color Config.	K.C.Y.M.				
Ink Supply System	2L Ink tanks + cartridges				
Printing Width	Up to 1800mm				
Media Type	PU				
Roll Weight	Up to 200kgs				
Roll Diameter	Feeder: 450mm; Take-up: 450mm				
Core Diameter	3 in (76.2mm)				
Drying System	One IR Dryer(WD1804E); Dual IR Dryers(WD1808E)				
Printing Speed	Print mode	Resolution	WD1804E	Resolution	WD1808E
	Draft	720x1200 dpi	68m <sup>2</sup> /h	720x1200 dpi	140m <sup>2</sup> /h
	Production	720x1200 dpi	53m <sup>2</sup> /h	720x1200 dpi	112m <sup>2</sup> /h
	High-res	720x1800 dpi	40m <sup>2</sup> /h	720x1800 dpi	85m <sup>2</sup> /h
Data Interface	External: Ethernet; Internal: Fiber Optical				
Working Environment	Temp.23°C~29°C, Humidity:50%~80%				
Software	PhotoPRINT/ Riin...+GZ PrintExp				
Power	WD1804E: Single phase, 50Hz/AC, 220V±10% , 16A(Printer)+17A(IR Dryer) WD1808E: Single phase, 50Hz/AC, 220V±10% , 16A(Printer)+32A(IR Dryer)				
Installed/Packed Size	LxWxH(mm): 3440x1530x1670/ 3600x1510x1710				
N.W./ G.W.	770kgs/1100kgs				

Specifications are liable to change without prior notice. The printing speeds are measured in 1.8 m width printing.



### Genuine Epson I3200 E1 heads

Genuine Epson I3200 print heads deliver unparalleled productivity with high print quality. Unique designed head mounting for quick setup and easy maintenance.



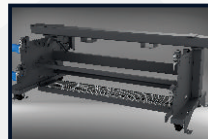
### High-precision stepping system

High precision belt system and speed reducer ensure accurate media feeding, perfectly eliminating the banding effect.



### High-precision Capping Station

High-precision capping station cleans the print heads efficiently, assuring perfect output, long print head life and low maintenance cost.



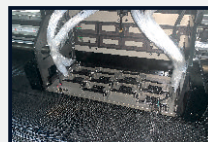
### Industrial level structure

Main frame with up to 8mm thickness of iron board for stable and long life of running.



### Heavy-duty Feeding System

Heavy-duty feeding system with air-shafts assures precise media unwinding and rewinding. It supports up to φ450mm of media roll diameter.



### Anti-collision system

Anti-collision system prevents media scratches, offering all-around protection for the print heads.

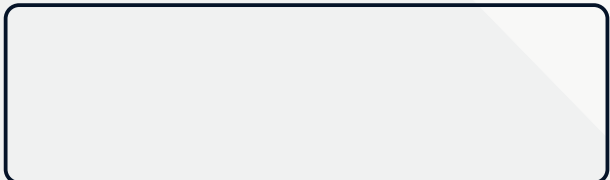
## Gongzheng Group Co., Ltd.

Add: Miaobei Village, Yongjia County, Wenzhou City, Zhejiang Province, China 325105  
Tel: +86-577-67319778  
Email: gzsales@gongzheng.com  
Web: www.gongzheng.com

Scan to watch video



## Authorized distributor:



@GONGZHENG GROUP