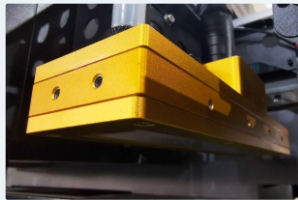


High-speed Industrial Level Flatbed UV Solution

-About 30% faster than Ricoh Gen5 model

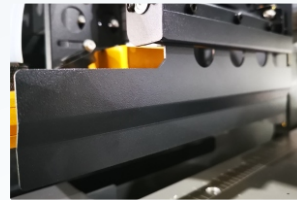
H2513GN



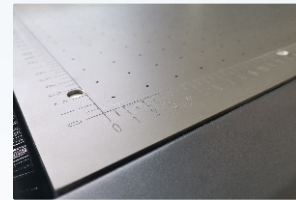
Enhanced water-cooling LED UV lamps cure the ink quickly during high speed printing



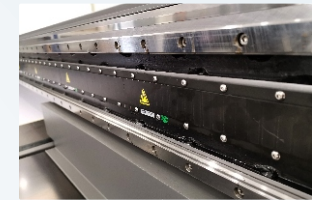
Auto height detector for up to 100 mm thick of material



Anti-collision device prevents print heads damage during printing



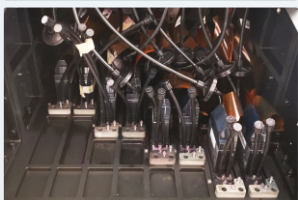
Precise vacuum table with 4 selectable zones, media alignment pins and blowing function



Optional linear motor assures extremely accurate, quiet and stable movement



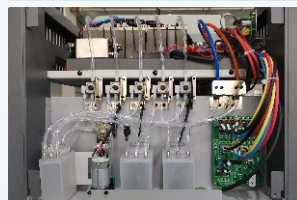
Up to 8 Ricoh Gen 6 print heads delivers outstanding productivity



Anti-static bars removes statics to ensure perfect printing quality



Gntek negative pressure system assures the excellent ink flow and stable jetting



Lead screws driven by dual 400w AC motors for precise Y movement



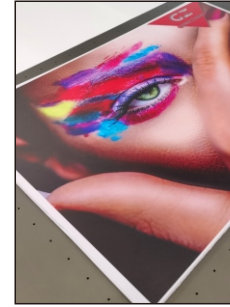
750w AC servo motor assures accurate and durable X movement



ITEM	SPECIFICATION				
Model	H2513GN				
Print Head	3~8 Ricoh Gen6 print heads				
Resolution	720x900~720x2400 dpi				
Curing System	Dual water cooling LED UV curing lamps				
Ink	UV curable ink				
Color Configuration	1xKCMY+1xWW+1xVV 2xKCMY+1xWW 3xKCMY 4xKCMY	1xKCMY+2xWW+2xVV 2xKCMY+2xWW 2xKCMY+1xWW+1xVV 3xKCMY+1xWW			
Ink Supply System	Gntek negative pressure system and white ink stirring & circulation system				
Ink Tank	2500ml				
Media Thickness	Max. 100mm				
Media Type	Acrylic, Aluminum sheet, Foam board, PVC board, Leather, Glass, Wood, Ceramic tile, etc				
Table Size	2650x1325mm				
Printing Size	Max. 2500x1300mm				
Printing Speed	Mode	Resolution	2xKCMY	3xKCMY	4xKCMY
	Draft	720x900dpi	40.3m ² /h	67.3m ² /h	88.0m ² /h
	Production	720x1200dpi	33m ² /h	53.9m ² /h	72.0m ² /h
	Hi-res	720x900dpi	26.2m ² /h	38.3m ² /h	51.4m ² /h
	Photo	720x1200dpi	20m ² /h	29.9m ² /h	40.1m ² /h
Data Interface	External: USB3.0; Internal: Fiber Optical				
Working Environment	Temp.20°C~30°C, Humidity:35%~65%				
Software	FlexiPRINT UV+GZ control console				
Power	Single-phase, 50/60Hz, AC220V+10% 13A(Printer&UV controller)+21A(Vacuum system)				
Packed/Installed Size	LxWxH(mm): 4700x2300x1750/4452x2040x1495				
G.W./N.W.	1606kgs/1200kgs				

*Specifications are liable to change without prior notice.

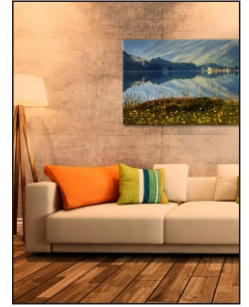
Applications



PVC board/KT board



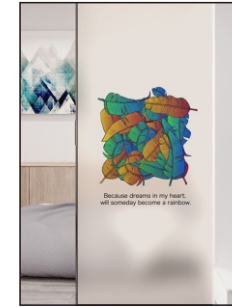
Metal



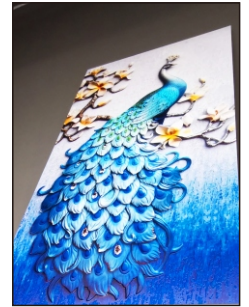
Wood



Acrylic



Glass



Ceramic

Gongzheng Group Co., Ltd.

Add: Miaobei Village, Yongjia County, Wenzhou
City, Zhejiang Province, China 325102
Tel: +86-577-67319778
Fax: +86-577-67319775
Email: gzsales@gongzheng.com
Web: www.gongzheng.com



Ver 2021.04.20

Authorized distributor:

